

BENDERLINK

ADVANCED
TUBULAR
TECHNOLOGIES, INC.

For Eaton Leonard Benders
Communications Software



For  VELOG - EL-2000 - PREMIER Benders
Setup / Edit Eaton Leonard Benders - *in Windows!*

ETHERNET and WIRELESS

Benderlink connects to Eaton Leonard benders through a rugged Ethernet network device attached to the bender called a **Benderlink Module** which communicates either using cable or wireless (WiFi). Since we used the Ethernet protocol, long distance issues of the past are removed.

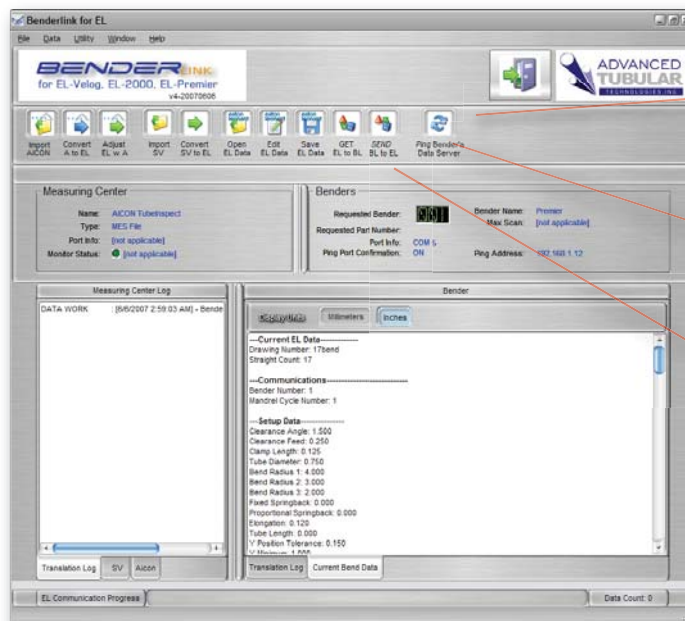

TubeInspect

AICON MEASURING CENTER ENABLED

Benderlink is designed to enable AICON TubeInspect measuring centers to communicate with Eaton Leonard benders. The AICON MES file format is imported to establish a new part, or to correct an existing part.

BACKUP DATA STORAGE

Store all your Eaton Leonard part data on your network for safe-guarding against data loss. Benderlink is configurable for connection up to 100 benders.



COMMUNICATE with EL VELOG, EL-2000, and PREMIER-style controls.



EDIT your Eaton Leonard bender's internal data in the **Benderlink Edit Eaton Leonard Data Window**.



MANAGE and **STORE** data for up to 100 different benders.

With EDIT EL Data Window, you can edit...

☐ Setup Data

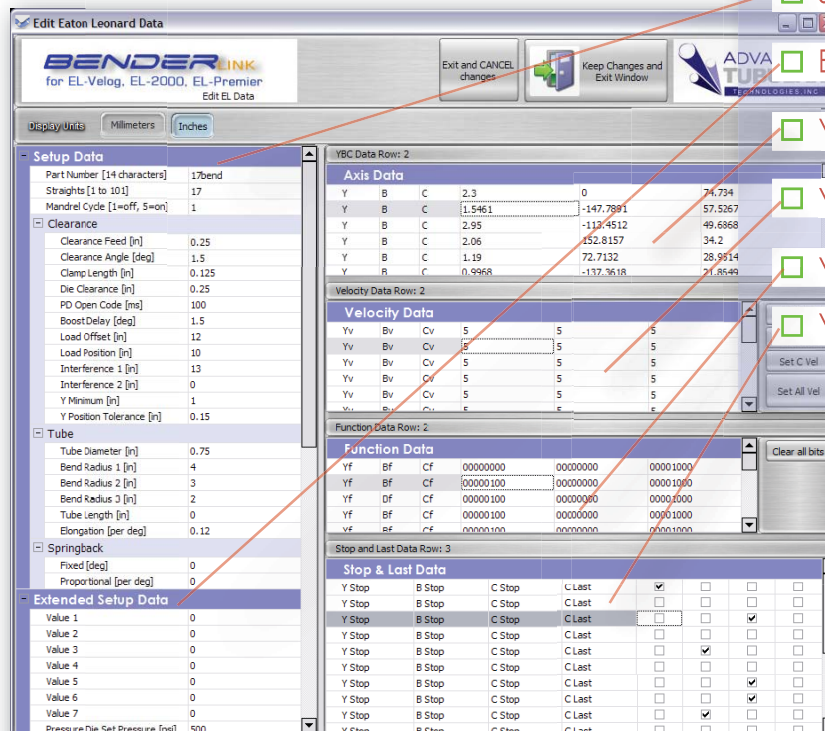
☐ Extended Setup Data

☐ YBC Data (Up to 100 benders)

☐ YBC Velocity Data

☐ YBC Function Data

☐ YBC "Stop" & "Last" Data



ADVANCED
TUBULAR
TECHNOLOGIES, INC.

14515 Mackey Road, Suite 202
Holly, MI 48442
Telephone: 248.674.2059
Facsimile: 248.724.0807
www.advancedtubular.com

BENDERLINK

For Eaton Leonard Benders



Features and Benefits of Benderlink Network



HIGH SPEED

Benderlink data communications is highly optimized. On most computers, a five bend part is transmitted to a Premier control in about 10 seconds.

UNITS: MM or ENGLISH

Benderlink can display and switch between bender data units in either millimeters or inches with the press of a unit button on the main window or in the Data Edit window.

CORRECTIONS LOOPS

Use AICON TubeInspect measuring centers to *correct* your Eaton Leonard bender based upon part measurements - shaving initial setup time.

SETUP TEMPLATES

When converting new data from AICON or SUPRAVISION formats to the Eaton Leonard format, Benderlink allows you to use existing data files to initialize the setup of new files. This saves operators from having to re-enter setup data that can be re-used on a regular basis.

Display Units:

Axis Data Row:				
Axis Data				
Y	B	C		4.378
Y	B	C		8.7
Y	B	C		11.55
Y	B	C		2.6
Y	B	C		1.41
Y	B	C		3.5
Y	B	C		3.76
Y	B	C		7.181

Axis Data Row:				
Axis Data				
Y	B	C		111.2012
Y	B	C		220.98
Y	B	C		293.37
Y	B	C		66.04
Y	B	C		35.814
Y	B	C		88.9
Y	B	C		95.504
Y	B	C		182.3974

- ☒ Keep the CURRENT EL SETUP Data as a
- ☐ Select a Benderlink for EL FILE as a TEM
- ☐ Clear the EL SETUP Data

The management of all your Eaton Leonard benders is *simple* with Benderlink - no matter if you have 10 benders or 100 benders.

ADD UP TO 100 BENDERS

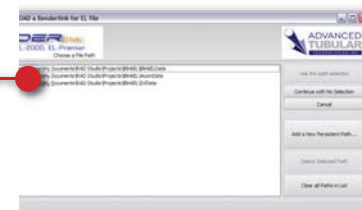
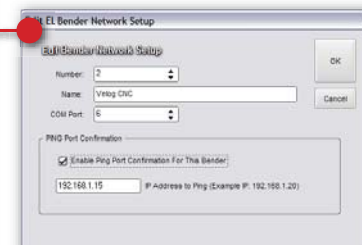
The Bender Network setup allows you to add and remove benders to/from the network. Each bender can be given a unique name and number.

ADD AN IP ADDRESS TO EACH BENDER

Because we use Ethernet technology in each Benderlink Module attached to your bender, each bender receives its own unique IP address - making the bender "pingable" before any communication begins. This feature allows Benderlink to determine if the bender is on the network before communications begins.

MANAGE DATA STORAGE LOCATIONS

The "Select Data Path" window allows you to easily define a unique path on the computer or over the network for *each* bender - allowing you to keep the data for each bender separated.



System Requirements

- ☐ Windows 2000 or XP
- ☐ Advanced Tubular Benderlink Module (one per bender)
- ☐ Cable: Ethernet cable with standard Ethernet switch
- ☐ Wireless: Standard Ethernet Router



For more information on any of our products or services please visit us on the Web at:
www.advancedtubular.com

Optional Service and Support Available

Project Planning
 On-site Installation and Setup



14515 Mackey Road, Suite 202
 Holly, MI 48442
 Telephone: 248.674.2059
 Facsimile: 248.724.0807
www.advancedtubular.com